

SEAMEN'S  
CHURCH INSTITUTE  
OF NEW YORK



SEVENTY-SIXTH  
ANNUAL REPORT  
1920

# ANNUAL REPORT

For the Year Ending 1920

PRESENTED AT THE  
ANNUAL MEETING OF THE SOCIETY

Wednesday, January 19, 1921

---

## STATIONS OF THE SOCIETY

---

SOUTH STREET INSTITUTE  
CHAPEL OF OUR SAVIOUR

SOCIETY'S ADMINISTRATION OFFICES  
25 SOUTH STREET, NEW YORK CITY  
Telephone Bowling Green 3620

---

NORTH RIVER STATION  
WEST STREET INSTITUTE

CHURCH OF THE HOLY COMFORTER  
341 WEST STREET (near Houston)  
Telephone Spring 1623

---

INSTITUTE TENDER, "J. HOOKER HAMERSLEY"

---

SUPERINTENDENT  
REVEREND ARCHIBALD R. MANSFIELD, D.D.



THE "INSTITUTE"

25 South Street (corner Coenties Slip)

In view of every vessel entering the Harbor. Thirteen stories above the street and three below, of concrete, steel and brick. Ground, building and equipment cost \$1,225,000. Titanic Memorial Lighthouse Tower and Time Ball, erected by popular subscription. Flag Pole and Flags presented by Lafayette Post No. 140, G. A. R. Top Floor, Navigation and Marine Engineering School, Clinic, Meredyth Whitehouse Memorial, gift of Mr. and Mrs. Francis M. Whitehouse.



# Officers and Managers of the Society

Chosen at the *Annual Meeting*, January 19th, 1921.

## Honorary President

RT. REV. WILLIAM T. MANNING, D.D., D.C.L., 1908

## President

EDMUND L. BAYLIES, 1885

## Clerical Vice-Presidents

RT. REV. FREDERICK BURGESS, D.D., 1906	REV. ERNEST M. STIRES, D.D., 1902
RT. REV. EDWIN S. LINES, D.D., 1908	REV. WILLIAM TUFTS CROCKER, 1903
VERY REV. HOWARD C. ROBBINS, D.D., 1918	REV. C. F. J. WRIGLEY, D.D., 1909
REV. HENRY LUBECK, LL.D., D.C.L., 1889	REV. CHARLES L. SLATTERY, D.D., 1910
REV. S. DE L. TOWNSEND, D.D., 1900	REV. FRANK WARFIELD CROWDER, D.D., 1916

## Lay Vice-Presidents

WILLIAM H. BUTTERWORTH, 1873	LISPENARD STEWART, 1883
JOHN H. MORRISON, 1877	JOHN A. MCKIM, 1880
ALLISON V. ARMOUR, 1917	

## Secretary and Treasurer

FRANK T. WARBURTON, 46 Cedar Street, 1888

## Lay Managers

B. T. VAN NOSTRAND, 1887	OLIVER ISELIN, 1912
ROBERT L. HARRISON, 1901	VINCENT ASTOR, 1912
AUGUSTUS N. HAND, 1902	SIR T. ASHLEY SPARKS, 1912
HERBERT L. SATTERLEE, 1902	MARINUS W. DOMINICK, 1912
EDWIN A. S. BROWN, 1904	JOHN S. ROGERS, 1913
CHARLES A. CLARK, 1905	LEROY KING, 1913
CLINTON E. BRAINE, 1905	LOUIS GORDON HAMERSLEY, 1913
BENJAMIN R. C. LOW, 1905	CHARLES E. DUNLAP, 1915
GEORGE E. CUMMINGS, 1905	GEORGE W. BURLEIGH, 1915
HENRY L. HOBART, 1907	EDWIN DET. BECHTEL, 1915
FRANKLIN D. ROOSEVELT, 1908	BERNON S. PRENTICE, 1916
AYMAR JOHNSON, 1908	JAMES BARBER, 1916
ERNEST E. WHEELER, 1908	JOHN J. RIKER, 1920
ROBERT McC. MARSH, 1908	F. KINGSBURY CURTIS, 1920
CHARLES W. BOWRING, 1909	EDWARD J. BARBER, 1920
ORME WILSON, JR., 1910	FRANK C. MUNSON, 1920
FRANKLIN REMINGTON, 1911	JUNIUS S. MORGAN, JR., 1921
J. FREDERIC TAMS, 1911	WALTER WOOD PARSONS, 1921
BAYARD C. HOPPIN, 1911	HARRY FORSYTH, 1917

## Honorary Members

CLAYTON PLATT, 1891	FRANCIS M. WHITEHOUSE, 1917
---------------------	-----------------------------

## Superintendent

REV. ARCHIBALD R. MANSFIELD, D.D., 1895

Note: Dates refer to year of election.

# Committees of the Board of Managers

## North River Station

EDWIN A. S. BROWN, Chairman, 1 Newark Street, Hoboken, N. J.		
HENRY L. HOBART	BAYARD C. HOPPIN	ROBERT McC. MARSH
	GEORGE W. BURLEIGH	

## South Street Institute and Sub-Committees

EDMUND L. BAYLIES, Chairman, 54 Wall Street	ALLISON V. ARMOUR, Vice-Chairman	VINCENT ASTOR	AUGUSTUS N. HAND	FRANK C. MUNSON
		JAMES BARBER	ROBERT L. HARRISON	FRANKLIN REMINGTON
		EDWIN DET. BECHTEL	HENRY L. HOBART	JOHN S. ROGERS
		CHARLES W. BOWRING	OLIVER ISELIN	SIR T. ASHLEY SPARKS
		GEORGE W. BURLEIGH	AYMAR JOHNSON	J. FREDERIC TAMS
		EDWIN A. S. BROWN	LEROY KING	B. T. VAN NOSTRAND
		REV. WM. TUFTS CROCKER	BENJAMIN R. C. LOW	ERNEST E. WHEELER
		MARINUS W. DOMINICK	JOHN A. MCKIM	REV. C. F. J. WRIGLEY, D.D.
		CHARLES E. DUNLAP	JUNIUS S. MORGAN, JR.	

## Committee on the Hotel

EDMUND L. BAYLIES, Chairman, 54 Wall Street	ALLISON V. ARMOUR	AUGUSTUS N. HAND	ERNEST E. WHEELER
	VINCENT ASTOR	FRANKLIN REMINGTON	
	CHARLES E. DUNLAP	B. T. VAN NOSTRAND	

## Committee on Social Work and Entertainment

BERNON S. PRENTICE, Chairman, 115 Broadway	CHARLES E. DUNLAP	AYMAR JOHNSON	LEROY KING
	OLIVER ISELIN	BENJAMIN R. C. LOW	

## Committee on Religious Work

HENRY L. HOBART, Chairman, 120 Front Street	EDWIN A. S. BROWN	ROBERT L. HARRISON	BENJAMIN R. C. LOW
	REV. WM. TUFTS CROCKER	REV. C. F. J. WRIGLEY, D.D.	

## Committee on Educational Work, Library, etc.

ALLISON V. ARMOUR, Chairman, 375 Park Avenue	J. FREDERIC TAMS, Vice Chairman, 52 Pine Street	
EDWIN DET. BECHTEL	MARINUS W. DOMINICK	LOUIS GORDON HAMERSLEY
FRANK C. MUNSON	FRANKLIN D. ROOSEVELT	

## Committee on Shipping and Seamen's Savings

CHARLES E. DUNLAP, Chairman, 1 Broadway	JAMES BARBER	WALTER WOOD PARSONS	SIR T. ASHLEY SPARKS
	FRANK C. MUNSON	J. FREDERIC TAMS	
	EDWARD J. BARBER	CHARLES W. BOWRING	

## Committee on Boat and Harbor Service

J. FREDERICK TAMS, Chairman, 52 Pine Street	LOUIS GORDON HAMERSLEY	AYMAR JOHNSON	FRANKLIN REMINGTON
	OLIVER ISELIN	LEROY KING	

## Legislation

ERNEST E. WHEELER, Chairman, 60 Wall Street	EDMUND L. BAYLIES	EDWIN DET. BECHTEL	JOHN S. ROGERS
---	-------------------	--------------------	----------------

## Ways and Means

BAYARD C. HOPPIN, Chairman, 120 Broadway	JOHN S. ROGERS, Vice-Chairman, 27 Cedar Street	
GEORGE W. BURLEIGH	HARRY FORSYTH	BERNON S. PRENTICE
CHARLES W. BOWRING	ROBERT L. HARRISON	FRANK T. WARBURTON
CHARLES A. CLARK	JOHN A. MCKIM	ERNEST E. WHEELER

## Trust Funds

JOHN A. MCKIM, Chairman, 6 East 74th Street	ROBERT L. HARRISON	JUNIUS S. MORGAN, JR.	BERNON S. PRENTICE
---	--------------------	-----------------------	--------------------

## Committee on "The Lookout"

EDWIN DET. BECHTEL	HENRY L. HOBART
--------------------	-----------------

## Attorneys for the Society

CARTER, LEDYARD & MILBURN, 54 Wall Street



# Annual Report of the Board of Managers

JANUARY, 1921

During the *seventy-sixth* year of the SEAMEN'S CHURCH INSTITUTE OF NEW YORK, the legitimate requests by seamen for the service which the Institute holds itself out to give were so far in excess of its capacity to respond that no definite estimate can be made of the number of men seeking lodgings, with money to pay for the same, who were of necessity turned away. Our staff found it impracticable to keep count.

If the work of the Institute consisted in mere loose or sentimental giving, its expansion would certainly be destitute of any element of surprise, and would be unjustifiable either from the standpoint of social betterment or Christian morals. The sailor pays a fair price for his lodgings and food; for the care of his dunnage and for other services such as are adjuncts to any great hotel. What he does not pay for in money is the kind of place in which he finds himself; the comfort of game and reading rooms; the entertainment he delights in; the social and religious service of many kinds from which he benefits; in short, the clean and friendly atmosphere that makes him feel at home. This margin of cost over return which shows on the books of the Institute and similar organizations is simply an expression by the people of the great port of New York of a *whole-hearted Christian hospitality*. It is a recognition of the homeless quality of Jack's life; that ashore he is, perhaps, irresponsible, and that if he does not get a welcome from us he will be most cordially received by that numerous gentry who pander to his weaknesses with a view solely to promptly separating him from his wages. It is a recognition that to give him a chance to deposit his money for safe keeping and transmission to his distant family, that to assist him with practical counsel and endeavor tactfully to recall him to his better nature, are sound purposes. The greatest port in the world can do no less than generously maintain such a social and Christian institute for those who contribute so essentially to its commerce and who could not by any effort of their own provide themselves with such a home ashore.

Convinced of the need of expansion, and encouraged by the keen appreciation of the seamen, the Board of Managers has taken action looking toward the early utilization of the property owned by the Institute adjacent to its building at South Street and Coenties Slip. Whether this can be done soon depends, of course, upon the generosity of our friends.

The short summary of the work of each department which follows, and the statistics given, must speak for themselves. However, we call especial attention to two significant items. We have received from seamen, for safe keeping, \$1,201,067.51, and have registered 260,449 lodgings.



Soda Fountain in Lobby, Commonly Called "Cheerfulness Centre"

## HOTEL AND RESTAURANT

The clerk at the *hotel desk* has the unpleasant duty of turning men away almost every hour of the day and night, because there are not sufficient beds. The work at the desk, however, is not simply the booking of lodgings. Here meal tickets are sold, and money, valuables and baggage are received at hours when other departments are closed. Here 9,100 wash-room tickets at fifteen cents each, which entitle a man to a bath and to the privilege of washing and drying his clothes, were sold.

The charge for a lodging is from 30 cents to \$1.00. Out of a possible full house for the year of 260,610 lodgings, we furnished 260,449—the difference being accounted for by the necessity of special cleaning or painting.

The *Baggage Department* has continued to render tremendous service. During the year 82,543 pieces have been checked in.

The *Restaurant Department* has tripled in growth since 1917. During the year 597,670 meal tickets were sold at an average price of 33 cents per ticket—an increase of 15,700 sales over last year.

At the *Soda Fountain* 450,000 sales were made, an increase over the preceding year of 86,924. The average sales price of each check was 15 cents.



The total number of pieces of incoming mail received by the *Post Office Department* was 214,460. Over 6,000 requests to forward mail have been received. We have installed and rented 801 "call boxes," for which a monthly charge of twenty-five cents is made.

#### INSTITUTE BUILDING

Every square foot of space in this sixteen-floor building is in use. The mechanical equipment and the structure itself is under the care of a competent superintendent and engineer. Most of the repairs, including plumbing and electrical equipment, are done by the engineer and his staff. Operation of engines, boilers, elevators, generators, laundry and refrigerating plant has been economically successful. The building is kept in good condition at what is believed to be the minimum of cost.

#### SEAMEN'S WAGES DEPARTMENT

The increase of business in this department has been tremendous. In 1902 there were 900 deposits, totaling \$54,000. During the past year 6,672 deposits have been made, amounting to the largest total ever received in our history, viz., \$1,201,067.51, of which amount \$238,701.25 was transmitted by request of the depositor to family or friends in 129 cities or towns representing 21 countries.

#### RELIGIOUS AND SOCIAL DEPARTMENT

This department is headed by the Director of Religious Work, who has at all times a staff of at least ten.

During the month of December, the average attendance at the Sunday evening services in the Chapel of Our Saviour was 248. The Chapel is generally well filled.

Evangelical services are held on Tuesday evenings in the public reading room with equally marked success. On Sunday afternoon, Bible Classes are well attended. The services conducted at the North River Station bring interesting and encouraging results.

As mentioned in our last report, one of our Chaplains is constantly in attendance at the *United States Marine Hospital* at Stapleton, and at the *Hospital for Seamen* at Ellis Island.

The *Chaplain's office* is the clearing house for all the religious and social work. Over 12,000 men have been recorded as coming for some kind of advice or assistance. Here is accomplished the real Christian and friendly results which count for more than anything else done in the building. Here practically all of the *relief work* and the *Loan Fund* are administered, and here is the *Lost and Found* department.

A *Medical Clinic* is conducted, and two doctors serve the building, one giving his whole time and the other part of his time. In the Clinic attention has been given to 4,967 cases.

*Medical lectures* are delivered, for the special consideration of men.

The *Libraries* and *Reading Room* tables are in charge of a Chaplain, and there is always an abundance of entertaining and suitable reading for the men.

*Entertainments* of various kinds totaling 213, with a total attendance of over 61,000, have been given.

Through the character of their employment, sailors are often lost to their relatives and friends. A *Missing Men* bulletin is issued and sent to all parts of the world. 1,000 seamen have been inquired for by relatives or friends, and since the issue of the first bulletin in January, 1920, 450 of those missing have been located. In conducting this bureau for the missing, the Institute is rendering a unique and touching service.

#### ACCOUNTING AND WAYS AND MEANS

The Board is confident that a comprehensive and accurate system of accounting is in operation. The burden of raising the amount representing the difference between cost and return rests upon the Committee on Ways and Means. If the work is to grow, new friends and benefactors must be found.

#### THE "LOOKOUT"

Our publication is read all over the world. Through it our work is given publicity, and by its accounts of happenings at the Institute, humorous, pathetic, and often tragic, the sailor becomes a real person to his unknown friends.

#### OTHER DEPARTMENTS

The *Laundry* has handled an average of 3,000 pieces *per day*, at a cost of less than 75 cents per hundred pieces, including cost of fumigation, repairs and light and power.

The *Slop Chest*, or general clothing and supply store, has continued to be operated, and the *Tailor Shop* much patronized, the latter having been used by 2,382 customers.

The *Shipping Department* (Employment Bureau) shows an improvement over last year and furnished during the year employment for 3,395 men, placing crews or parts of crews on board 383 vessels.

The *Harbor Boat* "J. Hooker Hamersley" during 1920 made 134 trips and visited 378 vessels.

#### NORTH RIVER STATION

The work at this station is functioning as well as inadequate room and equipment will allow. The funds allotted to this work are wisely spent, but the needs of this locality are by no means met. An enthusiastic group of volunteer workers are of great assistance here. A modern plant is greatly needed.

#### NAVIGATION AND MARINE ENGINEERING AND RADIO SCHOOL

Notwithstanding the discontinuance of the U. S. Shipping Board Engineering School, our school has had a total enrollment for the year of 972 students. Five hundred and twenty-seven students have successfully passed Government examinations and have secured licenses. The daily average attendance is 42. First aid lectures have been continued.

The *Radio School* received its first pupil last June, and has enrolled 54 students. A gift of \$5,000 with which to install a high-powered radio equipment has been received. It is expected that with this equipment we will be able to render medical first aid to vessels under all flags not having a doctor on board, and at a distance of from two to three thousand miles.

The Institute owns and maintains a *Cemetery Plot*, in Cedar Grove Cemetery, Flushing, Long Island, for the interment of homeless seamen.

#### LEGACIES

The following bequests have been made to the Society:

Mrs. Lucie B. Carew.....	\$5,000
Frederick S. Benson.....	5,000
Jane Matilda Maxwell.....	500
Adele E. Flint.....	5,000



Through the establishment of a National Organization, the *Seamen's Church Institute of America*, and by its encouragement of institutions in other ports, our organization continues to have a wide influence.

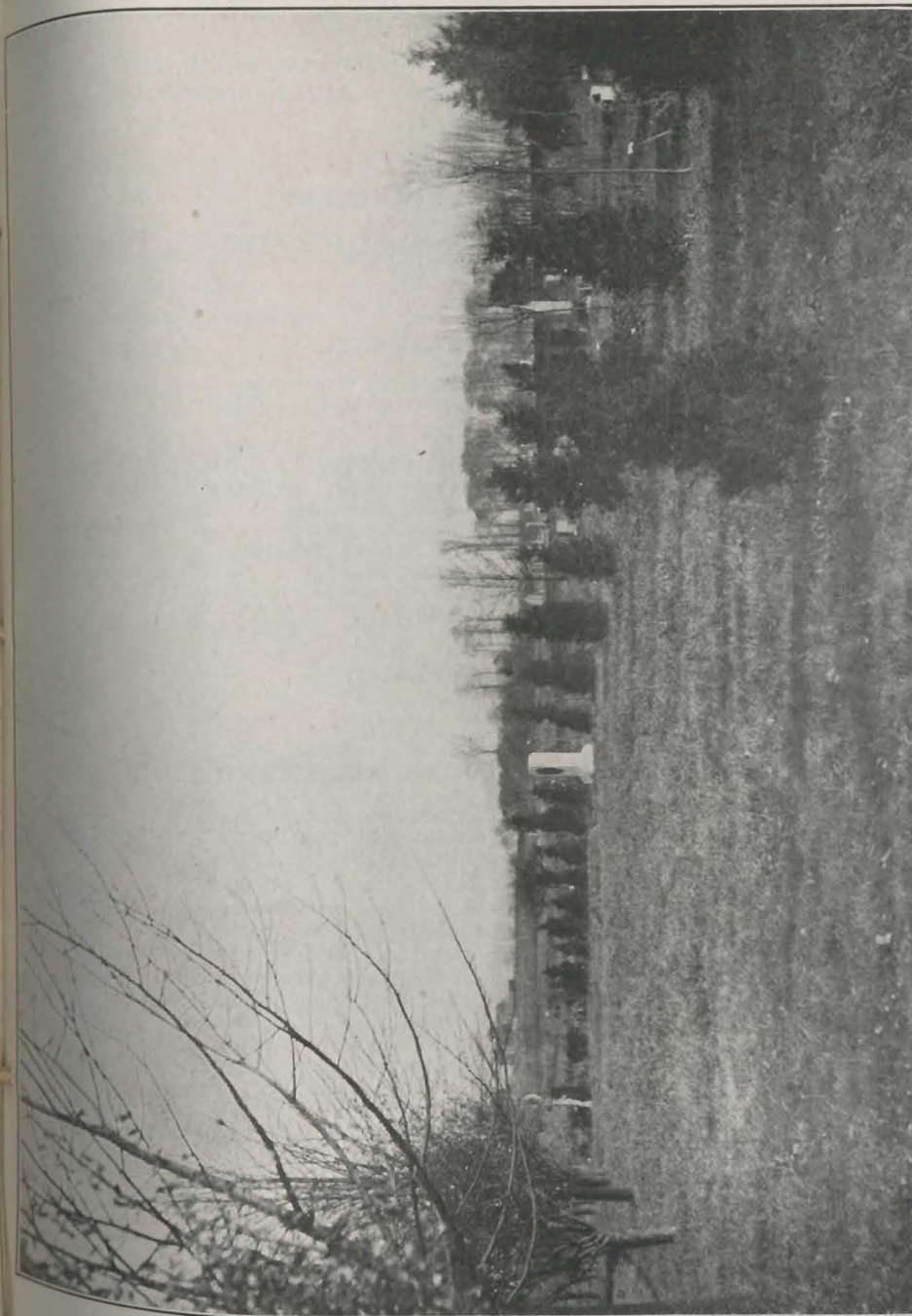
In closing this summary, the Board of Managers desires to again express its appreciation of the devoted and efficient work of the Rev. Archibald R. Mansfield, D.D., who has just completed 25 years of service as Superintendent. To him and his workers we are indebted for our confidence that this great work is worthy of any appeal we may make.

---

### OBITUARY

With shocking suddenness the Board of Managers was made aware on Dec. 20th, 1920, of the death of the **Right Reverend Charles Sumner Burch, D.D., L.H.D., LL.D.**, Bishop of the Diocese of New York and Honorary President of this Society for a little more than a year.

The Board records with profound sympathy its sorrow at the loss of a spiritual guide and a warm-hearted friend, who was genuinely interested in the work of this organization on behalf of the men of the World's Merchant Marine.



"To Bury Strangers In"  
Institute Plot (6,000 Square Feet) Cedar Grove Cemetery, Flushing, New York, Purchased in 1918  
Successor to the First Plot Given to the Society by The Evergreens' Cemetery in 1851



## GENERAL SUMMARY OF WORK

ALL STATIONS AND DEPARTMENTS, JANUARY 1, 1920, TO DECEMBER 31, 1920.  
Submitted by the REV. ARCHIBALD R. MANSFIELD, D.D., Superintendent.

### SEAMEN'S WAGES DEPARTMENT

Number of Deposits.....	6,672	Amount of Transmission.....	\$238,701.25
Amount of Deposits.....	\$1,201,067.51	Notary Signatures.....	801
Number of Transmissions.....	1,756		

### SHIPPING DEPARTMENT

Men signed.....	3,208	Total given employment.....	3,395
Men given temporary work....	187	Number of vessels supplied....	383

### RESTAURANT, SODA FOUNTAIN, SLOP CHEST, TAILOR, LAUNDRY, LODGINGS, MAIL, BAGGAGE, WASH ROOM

Total meals served.....	597,670	Lodgings registered.....	260,449
Sales at Soda Fountain.....	450,000	Mail received.....	159,460
Sales at Slop Chest.....	21,906	Baggage received.....	84,026
Sales in Tailor Shop.....	2,383	Barber customers.....	19,318
Laundry customers.....	4,908	Wash room tickets.....	9,100

### "J. HOOKER HAMERSLEY"

Trips .....	134	Visits .....	378
-------------	-----	--------------	-----

### RELIGIOUS AND SOCIAL, INCLUDING RELIEF AND CLINIC

English services.....	159	Knitted and other useful articles distributed .....	1,895
Total attendance.....	12,876	Christmas gifts.....	1,814
Bible classes.....	41	Reading matter distributed....	6,556
Total attendance.....	3,732	Ships visited.....	869
Miscellaneous services.....	68	Home Hour.....	50
Attendance miscel. services....	3,317	Attendance .....	5,377
Communion services.....	78	Relief assisted through M. M. & B. Fund and other funds..	2,547
Communion services, hospital..	10	Treated in Inst. Clinic.....	5,248
Baptisms .....	11	Referred to other societies....	102
Marriages .....	7	Sent to hospitals.....	467
Funerals .....	48	Visits to hospitals.....	582
Services at hospitals.....	86	Visits to patients.....	63,406
Total attendance.....	4,262		
Entertainments .....	213		
Total attendance .....	61,852		

### NAVIGATION AND MARINE ENGINEERING SCHOOL

Students enrolled.....	972	Daily average attendance....	42
First aid lectures.....	75	Questions and Answers sold..	1,258
Attend first aid lectures.....	1,800	Catalogues and circulars sent..	2,829
Examined and passed Local Inspectors .....	527	Ships aided in transmitting radio messages .....	31
School certificates issued.....	56		

## TREASURER'S ANNUAL STATEMENT

JANUARY 1, 1920 TO DECEMBER 31, 1920

### INCOME

Revenue from Outside Sources:	
Subscriptions and Donations .....	\$86,882.95
Church Offerings .....	1,563.03
Collections on Ships .....	2,484.16
Net Income from Invested Funds.....	12,170.89
	\$103,101.03

#### Revenue from Institute Activities:

Hotel (including Lodgings, Barber Shop, Wash Room, Post-Office), Baggage Room, Restaurant, Soda Fountain, Slop Chest, Shipping and Printing Departments, Navigation, Marine Engineering and Radio School..	\$463,978.78
North River Station .....	276.24
Rent, British Consulate General Shipping Branch.....	1,877.00
Miscellaneous .....	217.82
	\$569,450.87

### EXPENDITURES

Institute Building, 25 South Street:	
Religious and Social Work .....	\$33,249.98
Salaries of Superintendent and Staff, Wages of Employees in all other Departments; also supplies for Hotel, Restaurant, Engine Room, Slop Chest, Printing Department, Navigation, Marine Engineering and Radio School, etc. ....	533,863.60
Institute Boat "J. Hooker Hamersley" and Shipping Department, Salaries and Expenses .....	9,788.30
"The Lookout:" Salaries, Printing and Postage.....	6,318.35
Repairs and Replacement Fund.....	7,000.00
North River Station: Salaries, Expenses, Repairs.....	9,878.36
	\$600,098.59
Deficit .....	\$30,647.72

FRANK T. WARBURTON, Treasurer.



## COMMITTEE ON TRUST FUNDS

### SUMMARY

#### ASSETS

Railroad securities, etc. ....	\$148,248.99	
Bonds and Mortgages .....	8,750.00	
Real Estate: 52 Market Street.....	\$10,000.00	
Front Street property .....	82,104.34	92,104.34
Cash on deposit:		
Emigrant Industrial Savings Bank .....	\$250.00	
N. Y. Life Insurance & Trust Co.....	38,829.33	39,079.33
		\$288,182.66

PERMANENT FUND: Income to be applied to the general uses of the Society.

Balance, last report .....	\$115,674.64	
Legacy, Sarah M. Perrott .....	\$2,715.24	
Legacy, Albert E. Beh .....	50.00	
Legacy, Margaret E. Zimmerman .....	5,000.00	
Legacy, Christiana Schoosmith .....	1,437.50	
Legacy, Charles E. Rhinelanders .....	944.52	
Legacy, Louisa Combs .....	2,500.00	
Legacy, Fanny Bridgham .....	20,000.00	
Profit on bonds sold .....	22.51	
		32,669.77

	\$148,344.41	
Less amount paid Treasurer for working capital.....	18,000.00	\$130,344.41

WILLIAM WALDORF ASTOR TRUST FUND: Income to be applied first to the support of Missionary at East River Station, and afterwards to the maintenance of any missionaries employed by the Society.....	50,877.50
CHARLES E. RHINELANDER FUND: In memory of his wife Matilda F. Rhinelanders. Income to be applied to the general uses of the Society..	25,000.00
FREDERICK M. DEARBORNE MEMORIAL FUND: To constitute part of the Endowment Fund. Income to be applied to the general uses of the Society...	22,524.40

#### FUNDS FOR SPECIAL PURPOSES

DAVENPORT FUND: Income to be applied to the purchase of books for distribution among seamen .....	2,000.00
MORRILL FOUNDATION: In memoriam of the late Captain Charles Montgomery Morrill. Income to be applied exclusively to the relief of destitute mariners and those dependent upon them who may have been left destitute by their death while following the sea.....	17,831.25
HOSIER MORGAN FUND: Income to be used in common with that of the Morrill Foundation Fund .....	1,735.27
EMILY H. BOURNE FUND: Income to be used in common with that of the Morrill Foundation Fund .....	5,000.00
SEAMEN'S RELIEF FUND: Income to be used in common with that of the Morrill Foundation Fund .....	751.95
"C. A. R." MEMORIAL FUND: Income to be used for some needy object....	500.00
ROXY M. SMITH FUND: In memory of her husband, W. V. R. Smith. Income to be applied to giving annually an entertainment for seamen on the birthday of W. V. R. Smith, August 2nd.....	2,000.00
	\$258,564.78
Carried forward .....	

## Committee on Trust Funds (Continued)

Brought forward .....	\$258,564.78
CAPT. WILLIAM WILSON OWEN MEMORIAL FUND: Income to be applied to the use of destitute sailors under the care of the institute.....	250.00
CHAPEL FLOWER FUND: Income to be used for flowers for the altar of the Chapel .....	1,167.88
RAMAGE ENDOWMENT: Income to be used for the maintenance of dependent seamen .....	3,000.00
BRITISH AMERICAN WAR RELIEF FUND: Income to be used to relieve distressed British seamen .....	2,000.00
ANNEX BUILDING FUND: To endow rooms in Annex when built.....	3,200.00
GERARD BEEKMAN FUND: In memory of his brother James William Beekman. Income to be used to pay for a lay reader and sailor's friend in the sailor's reading room now dedicated to his brother.....	15,000.00
CHARLES E. POTTS FUND: Income to be used for the maintenance of the rooms in the building now or at any time hereafter maintained by the Institute known and designated as the Isabella Potts and Philip Ruprecht Rooms .....	5,000.00
	\$288,182.66
Total .....	\$288,182.66

#### INCOME

Received from Railroad Securities, etc.....	\$5,764.46
Received from Mortgages.....	2,949.50
Received from Emigrant Industrial Savings Bank.....	10.10
Received from New York Life Insurance & Trust Co.....	318.79
	\$9,042.85

Distributed as follows—

Permanent Fund .....	Paid Treasurer	\$2,523.39	
Astor Fund .....	" "	2,279.22	
Rhinelanders Fund .....	" "	1,103.30	
Dearborne Fund .....	" "	611.94	
Davenport Fund .....	" "	119.50	
		1,064.48	\$6,637.35
Morrill Foundation Fund .....	" "	102.09	
Morgan Fund .....	" "	247.50	
Bourne Fund .....	" "	44.57	
Seamen's Relief Fund .....	" "	7.50	
"C. A. R." Memorial Fund.....	" "	10.00	
Capt. Owen Fund .....	" "	178.20	
Ramage Endowment Fund .....	" "	60.00	
British American Relief Fund.....	" "	119.50	\$1,714.34
Roxy M. Smith Fund.....	" "	13.99	
Chapel Flower Fund .....	" "	398.36	
Gerard Beekman Fund .....	" "	1.23	
Potts Fund .....	" "	58.50	\$533.08
Astor Fund, transferred to Sinking Fund.....	" "	99.58	
New York Life Insurance & Trust Co., commissions .....	" "	99.58	\$158.08
		\$9,042.85	

Dated, New York, January 19th, 1921.

JOHN A. MCKIM,  
RO. L. HARRISON,  
JUNIUS S. MORGAN, JR.,  
Committee on Trust Funds.

Securities examined and found to agree with the foregoing account.

BAYARD C. HOPPIN,  
HARRY FORSYTH,  
WALTER WOOD PARSONS,  
Auditing Committee.



# Twentieth Annual Report

OF THE

## Seamen's Benefit Society

Twenty years ago, the only organization of women connected with the Seamen's Church Institute of New York began two customs that have left a bright wake of happiness down through the years. This is the Seamen's Benefit Society, which organized the first free Christmas dinner for the seamen, and the Sunday evening teas for the Apprentice Boys.

Had this organization done nothing else than point the way to this kind of service, it would have justified its existence; but every year it is able to report a carrying on of the old work and something new.

This organization gave "The Apprentice Room," one of the most beautiful rooms in the Institute, a room that is "home" to many thousands of boys during the year, and is also used for many other purposes that prove the need for such a meeting place.

It still provides the Sunday evening supper for the boys; the supper that has been talked of on the seven seas, the supper they can go to without an invitation and be just as welcome as if they had been expected. It has made Sunday different and worth while for hundreds, yes, thousands of boys, and from it they have gone to the Chapel, not because they were urged to do so, but because it was like "home" and when there they always went.

The Thursday evening parties have made many a boy reluctant to have his ship sail the first part of the week; and they are looked forward to as one of the reasons for getting to New York as soon as possible and staying as long as they can. These parties are supported by this organization.

But the need of the men is not forgotten and the Seamen's Benefit Society supplies a great abundance of reading matter; it sews for the Institute and sent a lot of towels made by the Lenten Sewing Class; and it also sent flowers for the Chapel of Our Saviour.

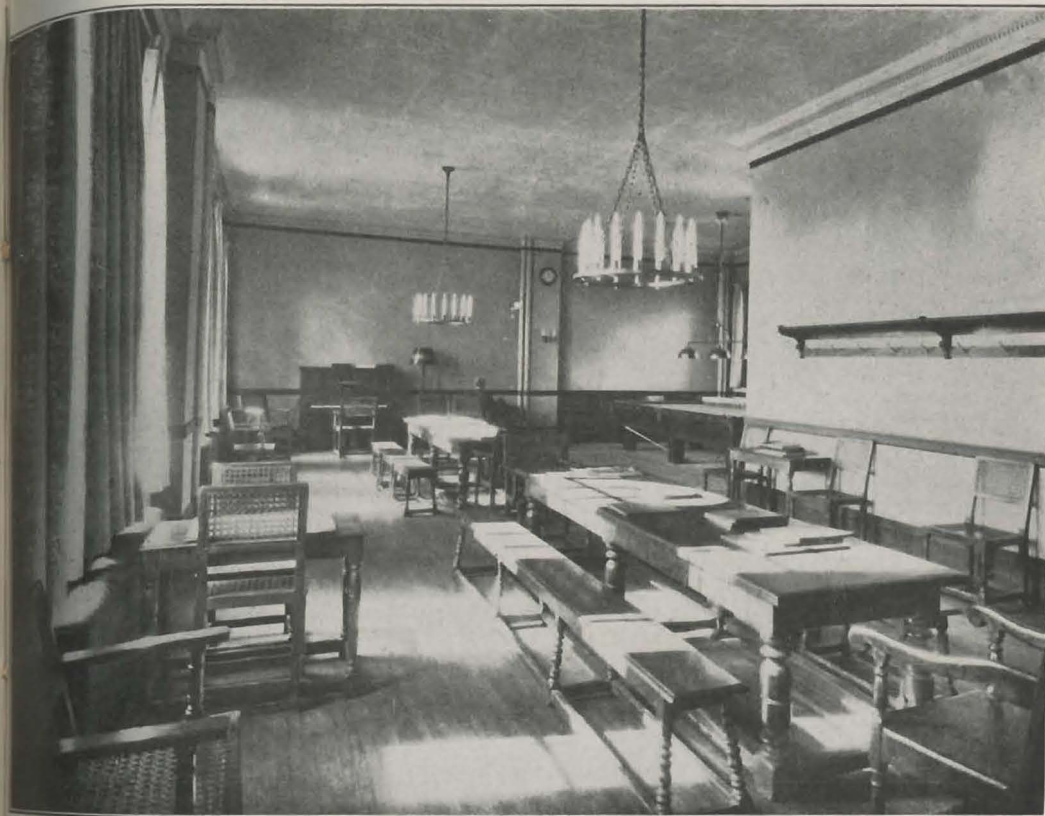
Special treats come from this organization from time to time, such as theatre tickets, or money for picnics, or automobile trips.

This year the ladies of this organization have assisted at the "Home Hour," the hour after the Sunday evening service in the Chapel, when the men go to the Concert Hall, and sit around small tables in a friendly way, and talk and listen to music, or sing together, or have someone give a short talk. This is followed by a cup of coffee and doughnuts, and it is when serving the men that the ladies have an opportunity to talk to them, and give to the evening the feminine touch that is so much valued by the men of the sea.

The Society is anxious to have the co-operation of all women who realize the tremendous importance of the work for merchant seamen; whose imagination enables them to visualize the handicaps of the men and boys in this calling.

AUGUSTA M. DE PEYSTER, *Secretary.*

December, 1920.



Apprentice Boys' Room. Given by the Seamen's Benefit Society

## SEAMEN'S BENEFIT SOCIETY

IN ACCOUNT WITH HELEN VAN C. LUNG, TREASURER

DECEMBER 1, 1919, TO DECEMBER 1, 1920.

<i>Receipts</i>		<i>Expenditures</i>	
Balance due, as per last report....	\$1,394.08	To cash paid Seamen's Church Institute:	
Dues .....	351.00	Social work, 1919.....	\$618.95
Interest .....	25.11	Social work, 1920.....	662.92
			\$1281.87
	\$1,770.19	Balance due Dec. 1, 1920.....	488.32
	\$1,770.19		\$1,770.19



# Seamen's Benefit Society

## Officers

MISS CATHARINE S. LEVERICH, *President*      MRS. H. VAN C. LUNG, *Treasurer*  
 MISS AUGUSTA M. DE PEYSTER, *Secretary*

## Active Members

MRS. H. GLOSTER-ARMSTRONG	MRS. VERNON MANN
MRS. WALTER P. ANDERTON	MRS. FRANK B. PORTER, JR.
MISS JOSEPHINE BEEKMAN	MRS. JOSEPH F. SIMMONS
MISS FRANCES DE PEYSTER	MRS. HENRY C. SWORDS
MISS ISABEL GREGORY	MRS. CHARLES F. SWAN
MRS. RYDER HENRY	MISS EMILY VAN AMRINGE
MISS MARGARET D. LEVERICH	MISS MARY WAGSTAFF
MRS. HOWARD L. MARTIN	MISS ETHEL ZABRISKIE

## Associate Members

MRS. BENJAMIN H. ADAMS	MRS. ANSON W. HARD, JR.	MRS. WILLIAM A. NETTLETON
MISS LOUISE H. BARNARD	MRS. ROBERT HOE	MISS EMILY NORRIE
MRS. CHARLES B. BARKLEY	MRS. FREDERICK T. HOPPIN	MRS. ALFRED DUANE PELL
MRS. EDMUND L. BAYLIES	MISS SARAH L. HORN	MRS. ALBERT E. PUTMAN
MRS. EDWARD N. BREITUNG	MRS. E. DE P. HOSMER	MRS. WILLIAM M. PURDY
MRS. J. J. BLODGETT	MRS. FRANK LONDON HUMPHREYS	MRS. FRANKLIN D. ROOSEVELT
MR. ALEXANDER JAY BRUEN	MISS MARGARET A. JACKSON	MRS. JAMES R. ROOSEVELT
MRS. ANDREW CARNEGIE	MISS LUCY H. KEAN	MRS. W. EMLEN ROOSEVELT
MRS. GEORGE L. CHENEY	MRS. RUTHERFORD KEARNY	MRS. HENRY G. SANFORD
MISS ANNIE CLARKSON	MRS. DAVID B. KING	MRS. HERBERT L. SATTERLEE
MRS. FRANCIS COLT	MISS EDITH KING	MISS DOROTHY SCHIEFFELIN
MRS. ARTHUR COPPELL	MISS CORNELIA KIRBY	MRS. MORTON L. SCHWARTZ
MRS. C. VANDERBILT CROSS	MRS. WOODBURY G. LANGDON	MRS. HENRY F. SHOEMAKER
MRS. B. FARQUHAR CURTIS	MRS. JOSEPH T. LOW	MRS. HENRY W. SHOEMAKER
MRS. JAMES MAY DUANE	MRS. SETH LOW	MRS. EDWARD B. SEXTON
MISS KATHARINE DU BOIS	MRS. WILLIAM G. LOW	MRS. EDWARD SPARROW
MRS. JOHN R. DELAFIELD	MRS. LEA McI. LUQUER	MISS ANNE STUYVESANT
MRS. H. CHAUNCEY DRYDES	MRS. JAMES MAC DONALD	MISS ELIZABETH M. VAN WINKLE
MISS LAURA DUDLEY	MRS. CHARLES M. MAC NEILL	MRS. JAMES B. VAN WOERT
MISS MILDRED EDDY	MRS. JAMES B. MABON	MRS. PATRICK A. VALENTINE
MRS. HAMILTON FISH	MRS. ALFRED T. MAHAN	MISS JULIA CHESTER WELLS
MRS. ERNEST FLAGG	MRS. EDWARD P. MEANY	MRS. LAWRENCE WELLS
MRS. ANSON R. FLOWER	MRS. MEYERKORT	MISS EDITH WETMORE
MISS CORNELIA GALLATIN	MRS. ABERCROMBIE MILLER	MISS CAROLINE WHITE
MRS. ELBERT H. GARY	MRS. HENRY LEWIS MORRIS	MISS MAY W. WHITE
MRS. J. J. GOODWIN	MRS. NEWBOLD MORRIS	MISS CAROLINE M. YOUNG
MISS FANNY GREGORY	MRS. J. I. MOUNT	

## Sustaining Members

MISS EMILY BUCH	MRS. CLEVELAND H. DODGE	MRS. WILLIAM WILLIS REESE
MRS. SAMUEL HINCKLEY	MRS. EDWARD H. PEASLEE	MRS. GEORGE A. ROBBINS

## Honorary Members

RT. REV. WILLIAM T. MANNING, D.D., D.C.L. Bishop of New York  
 H. GLOSTER ARMSTRONG, H.B.M., Consul General of Great Britain  
 STEIN PARVE, Consul General, The Netherlands  
 ROMOLO TRITONJ, Consul General, Italy



**TITANIC MEMORIAL LIGHTHOUSE TOWER**

*Time Ball drops daily, exact noon. Green Light burns nightly.  
 Three Cooper Hewitt Quartz lamps, each 2,500 candle power.*

## Form of Bequest

Those who contemplate making provision for the INSTITUTE in their WILLS may find the following form convenient:

I give and bequeath to the "SEAMEN'S CHURCH INSTITUTE OF NEW YORK," a corporation incorporated under the Laws of the State of New York, the sum of..... Dollars to be used by it for its corporate purpose.