



25 South St.



Brooklyn Bridge



S.S. Zealand



The Seafarers' Club
Bassine
Bumala



S.S. Zealand



M.V. Silverholm



M.V. Foresbank



S.S. Schreiner



S.S. Haleric, Rangoon



S.S. Corsican Prince



R. M. S. REGINA.



S.S. Hesperides



S.S. Gothic Prince



Wembley



The Mission
Rotterdam



Jim



S.S. Manchurian Prince
Sao Francisco do Sul
Brazil



Moemaekes
S/S Anversville
1925



Moemaekes
S/S Anversville
Walsley
1925



S.S. "PITTSBURG"
LENGTH 600 FEET. TONNAGE 16,322.

KIRK, COWES, COPYRIGHT

YESTERDAY'S INVESTITURE.



FOR SAVING LIFE AT SEA.—G. A. Parker and J. E. Snaith, Mercantile Marine, were decorated yesterday by the King. Showing their decorations on leaving. *(Daily Mail)*



M. V. Silveray
Sumatra

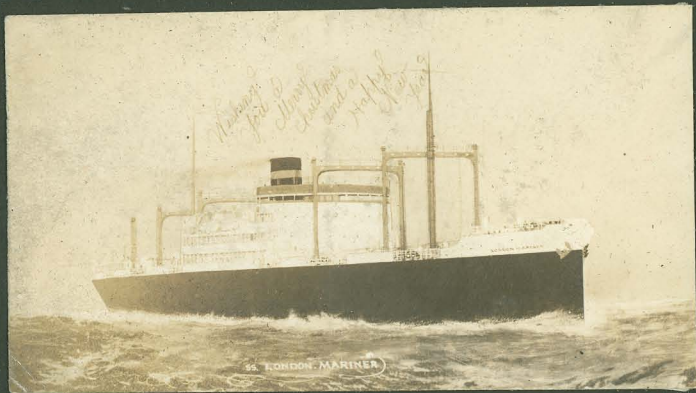


S.S. Portuguese Prince

SAVED IN ATLANTIC GALE.



Captain G. R. Rowntree (left), s.s. "Idaho," with Captain, crew and ship's dog of the three-masted Danish schooner "Eva," who were rescued in mid-Atlantic by the "Idaho" after being in the rigging for 36 hours without food. The schooner foundered shortly after their rescue. (Photo by Mr. Straker. 42. Whitefriargate, Hull.)





S.S. City of Florence



S.S. Keenan



M.V. Silveray



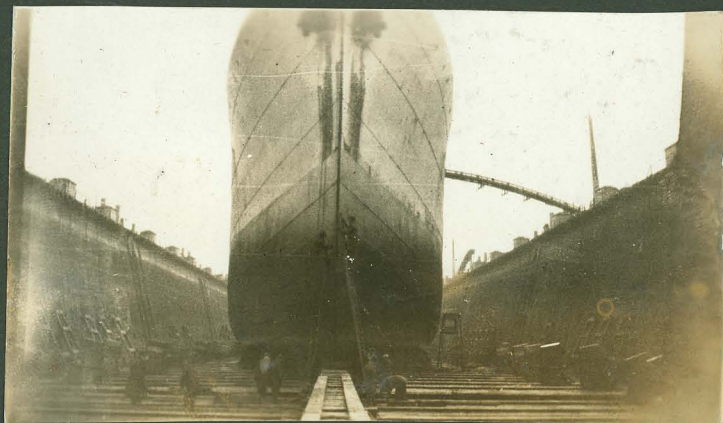
M.V. Brazilian Prince



Santos



S.S. Sardinian Prince



S.S. Siberian Prince



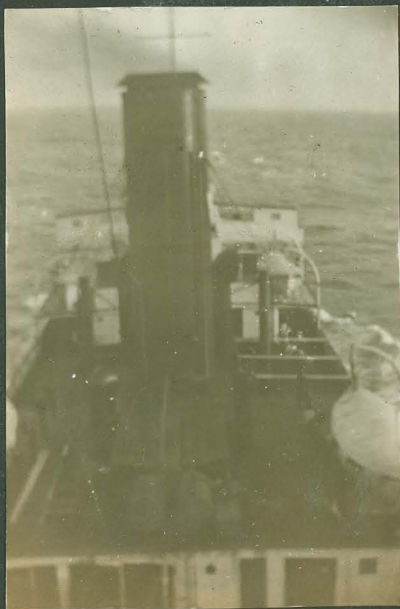
S.S. Dacre Castle



S.S. Scoresby



Rio



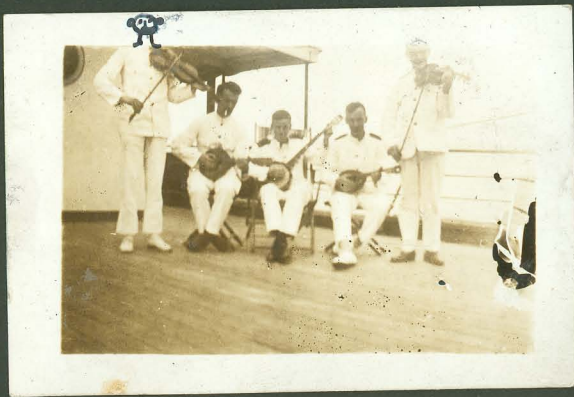
S.S. African Prince



S.S. Lowther Castle



S.S. Lowther Castle



S.S. Keenan



Yacht "Sapphire"
Gibraltar

Broughtons Here on Yacht

The Sapphire, one of the largest and most luxurious yachts in the world, anchored in the East River yesterday after a cruise from England that took her through the Mediterranean and up the Atlantic seaboard to here. The little palace belongs to Urban H. Broughton. The owner, Mrs. Broughton and their son, Huttleston, were the only passengers.

Mrs. Broughton is a daughter of the

late H. H. Rogers and, as was her father, extremely fond of the sea. The trip of the Sapphire to this country was but one of the many long trips she

has made. Last year the Broughtons took her all through the Far East.

The Sapphire was originally the property of Lord Furness, who sold her

after his wife died aboard the yacht. She is still commanded by Captain A. R. C. Reavley, who flew the white hunting of the Royal Yacht Club.





S.S. Mandalay



S.S. Portuguese Prince



S.S. Keemun
March
1926



SS. Kendal Castle

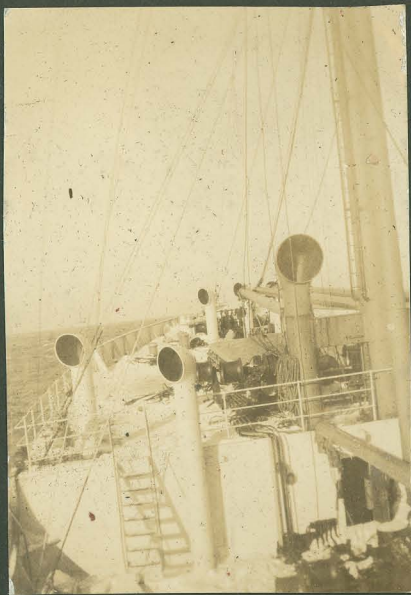


Itozaki



Newport News

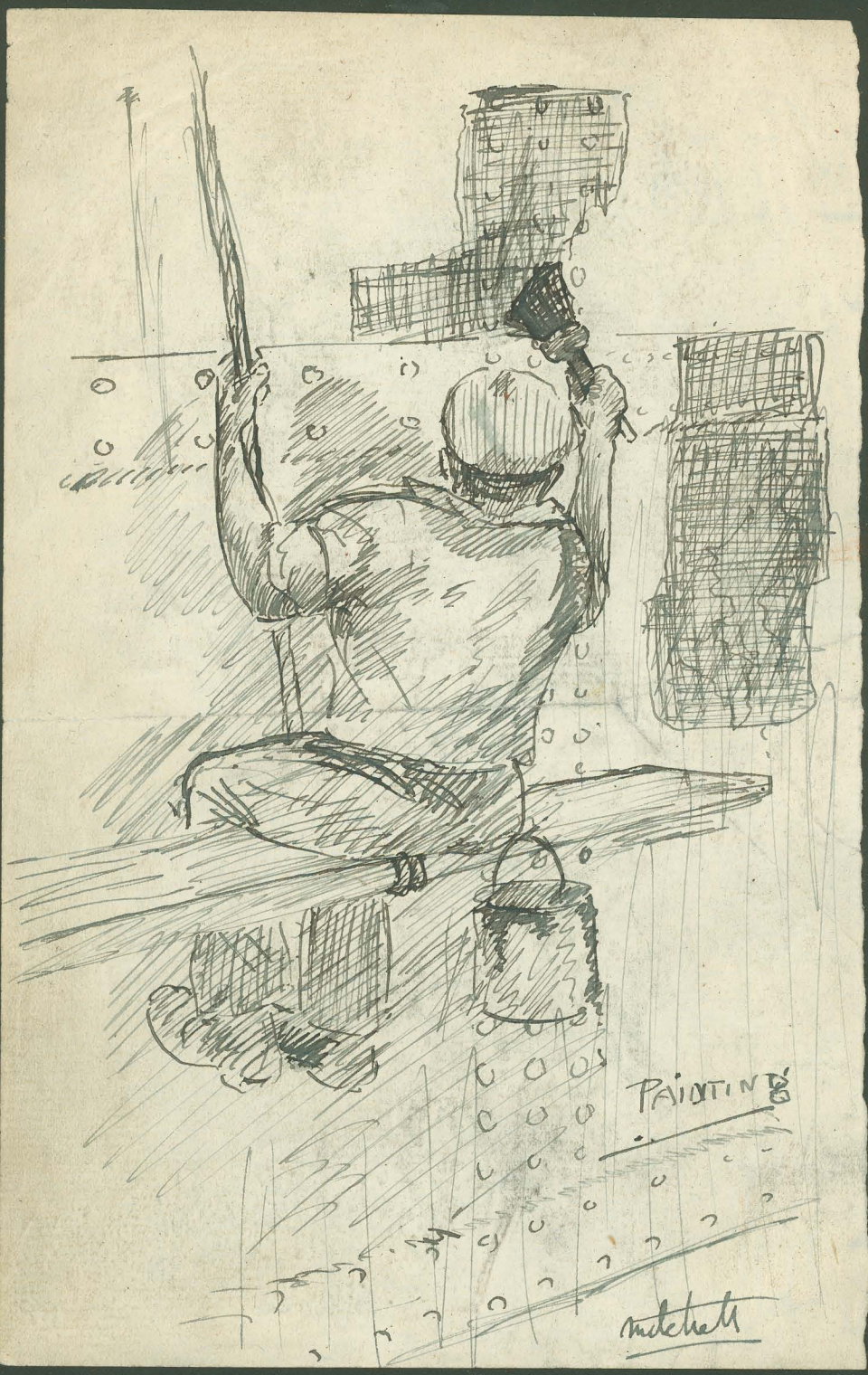
S.S. Slavic Prince



M.V. Brazilian Prince



S.S. Carlier



PAINTING

mitchell

S. S. Elveric





S.S. Moorish Prince
Bangkok



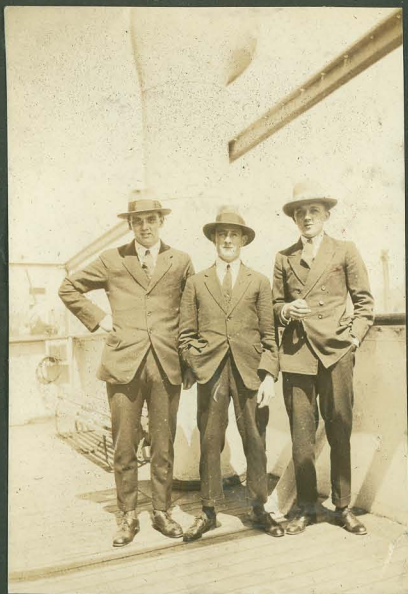
S.S. Zealand



S.S. Zealand



SS. Zealand

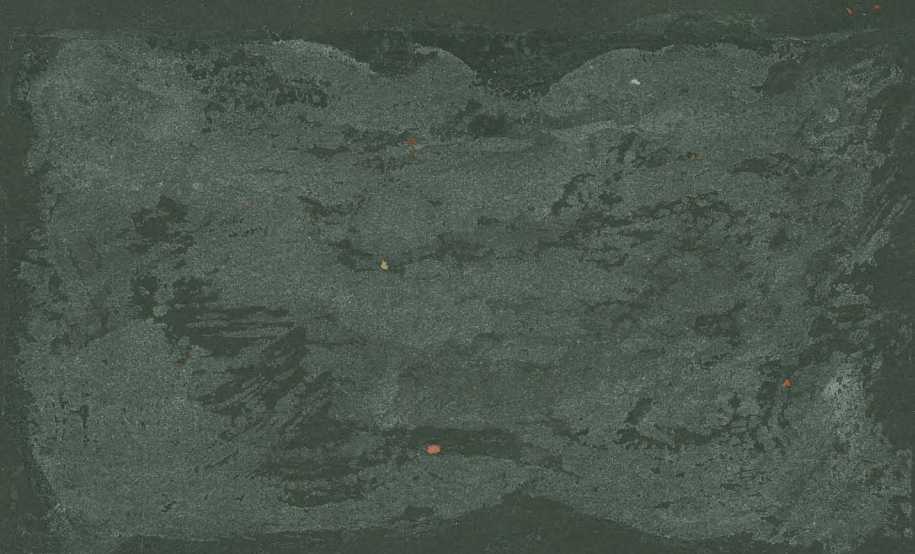


S.S. Moorish Prince
And

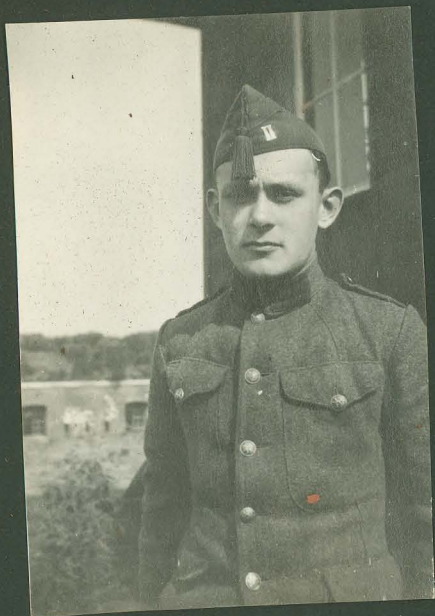
S.S. Corby Castle



S.S. Essequibo



S.S. Zealand



John
in the Belgian Army
ex S.S. Zealand



S.S. Port Hunter



The Chaplain
S.S. Elveric
S.S. Kumeric
S.S. Bolton Castle
S.S. Indian Prince
S.S. Moorish Prince
M.V. Asiatic Prince



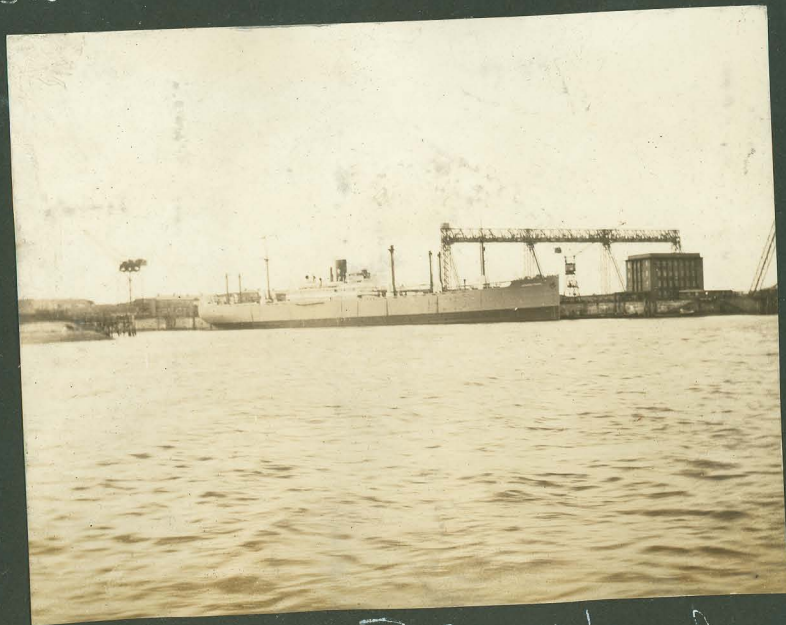
S.S. Siam City
at Couchin Cove and Englewood, B.C.



S.S. Siam City



R.M.S. Asturias
Santos



U.S.S. Japanese Prince, Hamburg

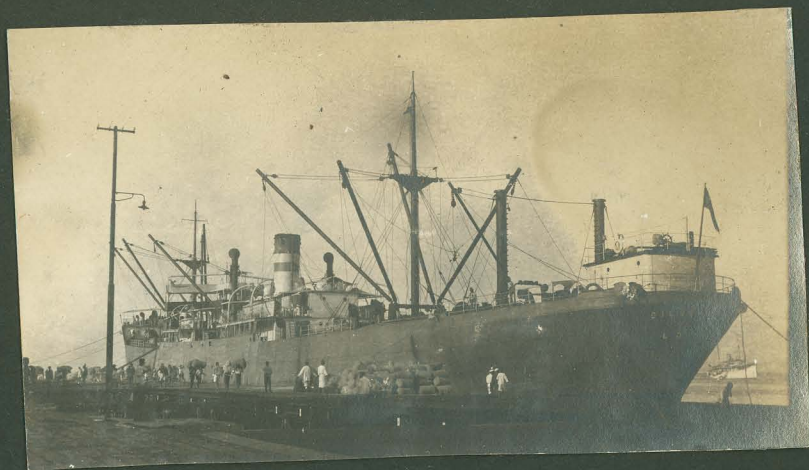


S.S. Kendal Castle





Alexandria



Macassar, D.E.I.



M. V. Silvercedar

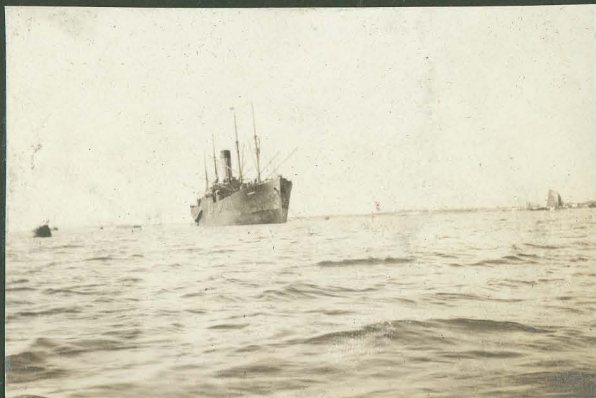


S.S. Gen-
eral Lubin





Pilot boat
San Francisco



S.S. Polaris
Callao